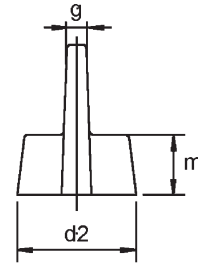
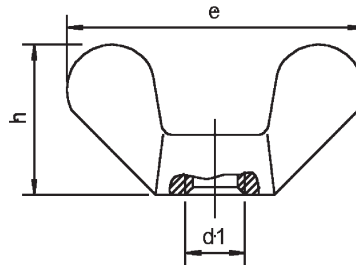


Wing Nuts DIN 315

A



METRIC	INCH	DIMENSIONS					VE
		e	h	d2	g	m	
M 4	5/32"	19,0	9,5	7,0	1,5	3,9	500
M 5	3/16"	25,0	12,0	9,5	1,9	5,3	500
M 6	1/4"	31,5	16,0	11,5	1,9	6,5	200
M 8	5/16"	37,5	19,0	14,5	2,4	8,3	100
M 10	3/8"	49,5	24,0	18,5	4,0	10,0	100
M 12	1/2"	63,5	32,3	21,5	4,5	12,0	50
M 14	9/16"	63,5	32,3	21,5	4,5	12,0	50
M 16	5/8"	71,5	36,3	27,5	6,0	15,0	20
M 20	3/4"	88,0	45,3	33,5	6,5	18,5	10
M 22	7/8"	88,0	45,3	33,5	6,5	18,5	10
M 24	1"	108,0	55,0	42,5	9,0	22,5	10

- » ergonomical formed wings
- » no sharp edges
- » stainless marked with the material and the dimension
- » ex stock available, as long as stock lasts
- » in accordance with ROHS (without chrome VI)

PACKING (VE): Commercial standard or after customer's request
 MATERIAL: Malleable cast iron EN-GJMB-350-10 acc. to DIN EN 1562, self colour, zinc plated, nickel plated acc. to DIN EN ISO 4042, other surfaces on request
 Brass (MS) 2.0401 acc. to DIN 17660 self colour, nickel plated acc. to DIN EN ISO 4042, other surfaces on request
 Aluminium (AL); stainless steel A2, A4, pickled, passivated
 TOLERANCE: Metric thread 6 H / DIN 13-20
 DIMENSION: The above mentioned dimensions are indicate only. They correspond to the average allowed during the production process.

