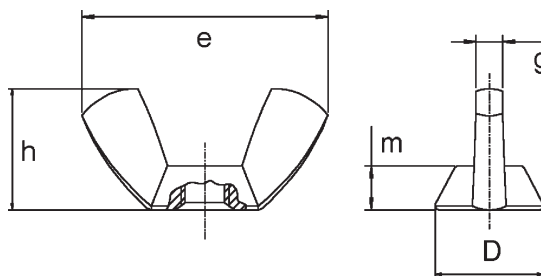


## Wing Nuts - American form cold forged

C



METRIC	INCH	DIMENSIONS					VE			
		e	h	D	g	m	steel	A2	A4	brass
M 3	1/8"	18,5	8,8	7,8	2,0	3,0	500	100	100	500
M 4	5/32"	18,5	8,8	7,8	2,0	3,0	500	100	100	500
M 5	3/16"	22,0	10,5	9,5	2,6	4,0	500	100	100	500
M 6	1/4"	26,8	12,9	11,9	3,0	4,9	500	100	100	500
M 8	5/16"	30,3	14,8	13,5	3,3	5,4	200	100	100	200
M 10	3/8"	35,3	17,3	15,3	4,0	6,3	100	100	100	100
M 12	1/2"	47,5	22,5	20,5	5,0	7,9	50	50	50	50
M 14	9/16"	65,0	30,8	25,0	6,5	10,6	50	50	50	50
M 16	5/8"	65,0	30,8	25,0	6,5	10,6	50	20	20	-
M 20	3/4"	66,5	31,2	29,3	7,2	12,2	50	20	20	-

» Metric thread ex stock, inch thread on request

PACKING (VE): Commercial standard or after customer's request

MATERIAL: Steel self colour, zinc plated, nickel plated acc. to DIN EN ISO 4042, other surfaces on request  
Brass self colour, nickel plated acc. to DIN EN ISO 4042, other surfaces on request  
Stainless steel A2, A4, pickled, passivated

TOLERANCE: Metric thread 7 H / DIN 13-20

DIMENSIONS: The above mentioned dimensions are indicate only. They correspond to the average allowed during the production process.