


KEYS

Mandril key, triangular or square socket

Dimensions: 4,0 mm 5,0 mm 6,0 mm 6,5 mm 7,0 mm 7,5 mm
Dimensions: 8,0 mm 8,5 mm 9,0 mm 10,0 mm 11,0 mm 12,0 mm

 4,0 – 8,5 100 Pcs 9,0 – 12,0 50 Pcs

Square wrench key, length approx. 110 mm, conus approx. 7-9 mm

 50 Pcs

Water tap key, square socket 5.3 x 5.3 mm for size 5

 100 Pcs

Angle key with hole, conus approx. 6-9 mm, square socket: 8 mm

 50 Pcs

Angle key without hole, conus approx. 6-9 mm, square socket: 8 mm

 50 Pcs



MATERIAL:

Malleable cast iron EN-GJMB-350-10 acc. to DIN EN 1562


SURFACE FINISH:

Non-plated, zinc-plated, nickel-plated acc. to DIN EN ISO 4042,
further finishes on request


Minimum volumes are required, depending on article or surface finish.

All of the dimensions stated above are approximate and may deviate both upwards and downwards.


HOOKS AND EYES

Suspension eyes	AO 700	AO 701	AO 702
Height approx. mm	28	35	54
Eye Ø approx. mm	10	14	28
Thread	M 6	M 6 / M 8	M 6 / M 8 / M 10
	100 Pcs	50 Pcs	50 Pcs



Suspension hooks	AH 710	AH 711	
Height approx. mm	28	34	
Eye Ø approx. mm	10	13	
Thread	M 6 / M 8	M 6 / M 8	
	100 Pcs	100 Pcs	



Mounting eyes	BO 716	BO 718	
Height x width approx. mm	40 x 18	45 x 24	
Eye Ø approx. mm	9	12	
Thread	M 6 / M 8	M 6 / M 8 / M 10 / M 12	
	100 Pcs	50 Pcs	



Staples	25 mm	30 mm	14x68 mm
Malleable cast iron EN-GJMB-350-10 acc. to DIN EN 1562			
Centre distance	50,8 mm	56,4 mm	54,3 mm
Clear span	25,5 mm	31,0 mm	30,2 mm
Full height	13,8 mm	13,9 mm	14,2 mm



Single hook	Mounting plate approx. 50x14 mm
Hole center distance	38 mm



Double hook	Mounting plate approx. 45x14 mm
Hole center distance	20 mm



MATERIAL: Malleable cast iron EN-GJMB-350-10 acc. to DIN EN 1562
SURFACE FINISH: Steel non-plated, zinc-plated, nickel-plated acc. to DIN EN ISO 4042, further finishes on request
TOLERANCE: Metric thread 6 H (untreated 6 G) acc. to DIN EN ISO 965-1

Minimum volumes are required, depending on article or surface finish.

All of the dimensions stated above are approximate and may deviate both upwards and downwards.

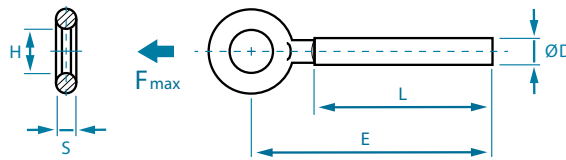
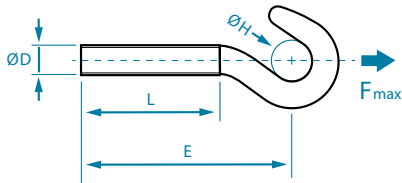
HOOK BOLTS WITH SHAPED HOOK



EYEBOLTS WITH CONTINUOUS RING



- » **Area of application: Suspension of heavy loads, use in turnbuckles acc. to DIN1480 or in anchors**
- » **Heavy type: Loads see last column**
- » **All dimensions are available at short notice**
- » **Also available with left-hand thread and in stainl. steel A2/A4**
- » **On request: Threads from M16-M33, strength class 8.8, BSW-thread**
- » **Made in Europe**



ØD	L (mm)	E	ØH (mm)		*F max (N)
M 5	40	53,6	7,5	1.500	380
M 5	48	63	7,5	1.250	380
M 6	40	55,5	9,5	1.000	600
M 6	50	65,5	9,5	750	600
M 6	55	70,5	9,5	750	600
M 8	52	75,5	11,0	400	1.100
M 8	60	83,5	11,0	350	1.100
M 10	60	87,5	14,0	200	1.500
M 10	73	100,5	14,0	200	1.500
M 12	66	101,5	18,0	125	2.750
M 12	90	125,5	18,0	75	2.750
M 14	82	120,5	17,0	75	3.850

ØD	L (mm)	E (mm)	H (mm)			*F max (N)
			Min	Max		
M 5	40	52,7	8,05	8,55	1.750	1.200
M 5	48	57,7	8,05	8,55	1.500	1.200
M 6	40	54,6	9,75	10,25	1.100	1.850
M 6	50	64,6	9,75	10,25	900	1.850
M 6	55	69,6	9,75	10,25	750	1.850
M 8	52	67,4	10,75	11,25	500	3.600
M 8	60	75,4	11,55	12,05	500	3.600
M 10	60	80,6	14,25	14,75	275	5.400
M 10	73	93,6	14,25	14,75	225	5.400
M 10	93	113,6	14,25	14,75	175	5.400
M 12	66	89,5	16,75	17,25	150	8.100
M 12	72	95,5	16,75	17,25	150	8.100
M 12	90	113,5	16,75	17,25	125	8.100
M 14	85	109,4	17,75	18,25	100	11.400
M 16	95	122,1	22,70	23,30	50	15.400

MATERIAL:

Steel, zinc plated A2K acc. to DIN EN ISO 4042- stainless steel A2 or A4

TOLERANCES:

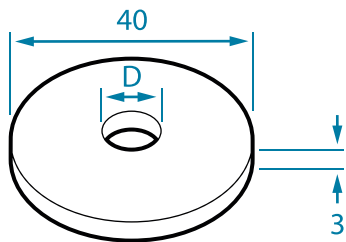
Metric thread 6h acc. to DIN EN ISO 965-1
Length "L": +2x pitches

LOAD VALUES "Fmax":

Nominal static load in direction of the arrow, safety factor 3.

All of the dimensions stated above are approximate and may deviate both upwards and downwards. Subject to prior sale.

WASHERS



Diameter D
8,4
10,5
13



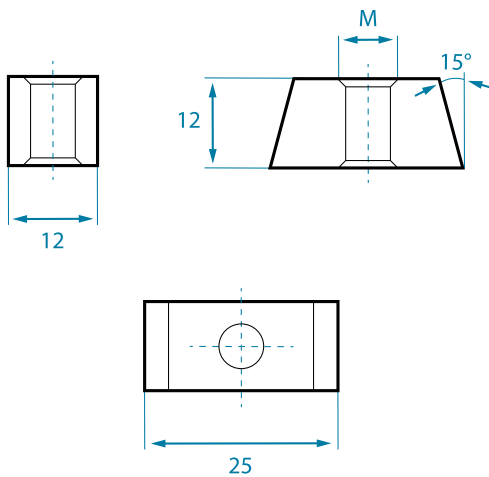
» Ideal dimensions for use in connection with strut channel system

PACKAGING: 100 pcs/box

MATERIAL: Steel, minimum hardness 130 HB, zinc-plated acc. to DIN EN ISO 4042, stainless steel A4, further dimensions and finishes on request

WEDGE NUTS

FOR CEILING SUSPENSION ON HOLORIB DECKING SYSTEMS WITH 15° V-SHAPED GROOVE



Thread M
M 4
M 5
M 6
M 8
M 10

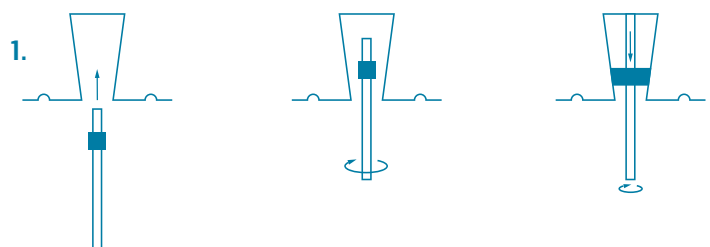


PACKAGING: 100 pcs/box

MATERIAL: Steel, min. hardness 130 HB, zinc-plated acc. to DIN EN ISO 4042, further finishes on request

Application:

1. Screw wedge nut on threaded rod
2. Guide wedge nut through the opening in the profile
3. Rotate threaded rod with wedge nut 90°, then pull downwards before tightening upwards until locking. The conical form then lies flat with the angle of the profile



All of the dimensions stated above are approximate and may deviate both upwards and downwards.

SPECIAL ITEMS

Semicircular washer

Malleable cast iron EN-6JMB-350-10

23 x 26 x 7 mm

With hole 12 mm



Star grip nut

Malleable cast iron EN-6JMB-350-10

With thread M10



Flag holders/ jointing sleeves

Malleable cast iron EN-6JMB-350-10 with or without lug



Holder for window shutter

Grey cast iron



- » According to BTS company standard
- » As complete special part acc. to drawing or sample
- » On request: Complete planning and design of new parts

SURFACE FINISH: For malleable cast iron parts, non-plated, zinc-plated, nickel-plated acc. to DIN EN ISO 4042, further finishes on request, see respective comments for other materials.

Minimum volumes are required, depending on article or surface finish.

All of the dimensions stated above are approximate and may deviate both upwards and downwards.