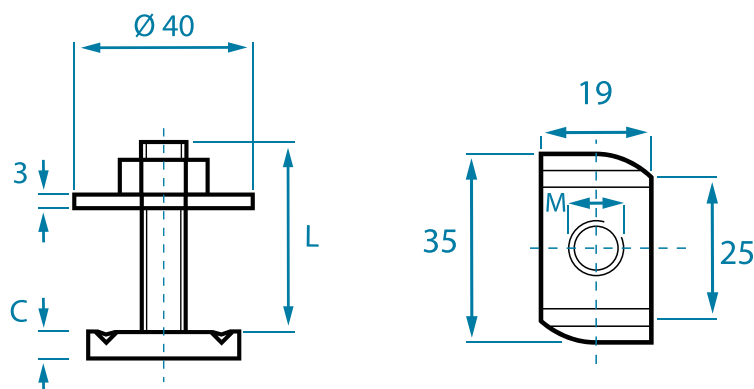



HAMMER-HEAD BOLTS

TWO-PIECE MODEL FOR STRUT CHANNELS



Measures in mm



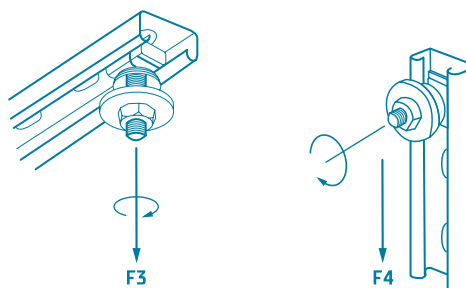
DIMENSIONS in mm /  pieces/box				
LENGTH (L)	C	M 8	M 10	M 12
	20	50 / 200	-	-
	30	50 / 200	50 / 200	50 / 200
	40	50 / 200	50 / 200	50 / 200
	50	50 / 200	50 / 200	-
	60	50 / 200	50 / 200	50 / 200
	80	50 / 200	50 / 200	50 / 200
	90	-	50	-
	100	-	50	50

Safe working loads for hammer head bolts

The following safe working loads apply for BTS hammer head bolts in steel and stainless steel for strut channels exposed to static load.

The maximum safe working load of the channel used is to be observed. BTS provides no guarantee for the safe working load of the channel.

Dimensions in mm	F3 [kN]	F4 [kN]	T [Nm]
M 6	5	1	3,5
M 8	6	2,4	8,4
M 10	7	3,5	17
M 12	7	4	29



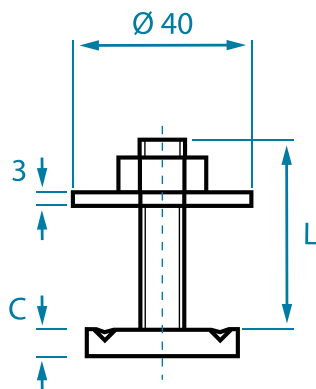
- » Pre-mounted with washer and hex nut DIN 934
- » On request: Hot-dip galvanised hammer head bolts, individual tothing and tooth distance, special thicknesses, special lengths
- » Complete special part, also for other profile sizes

MATERIAL: Steel, minimum hardness 130 HB zinc-plated acc. to DIN EN ISO 4042, stainless steel A4, additional finishes on request

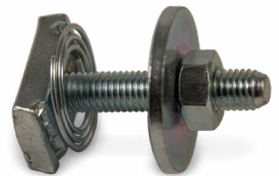
All of the dimensions stated above are approximate and may deviate both upwards and downwards.

TOPSCREWS

TWO-PIECE MODEL FOR STRUT CHANNELS



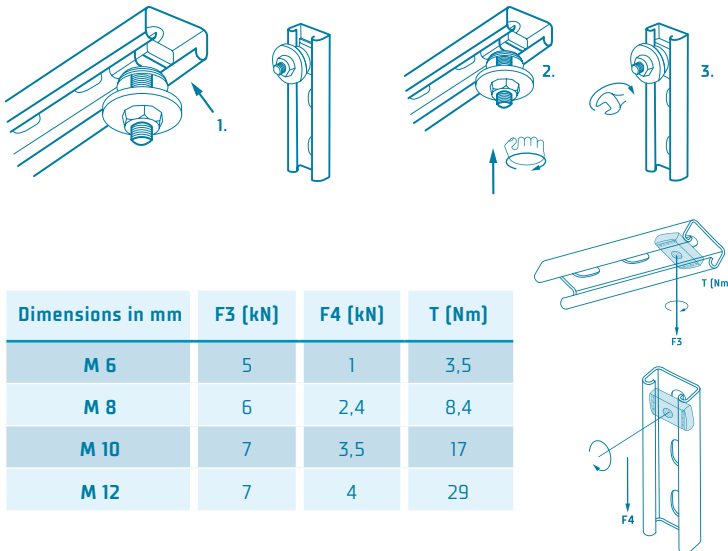
Measures in mm



DIMENSIONS in mm /  pieces/box				
LENGTH		M 8	M 10	M 12
	C	6 mm	8mm	9 mm
	30	50 / 200	50 / 200	50 / 200
	40	50 / 200	50 / 200	50 / 200
	50	50 / 200	50 / 200	-
	60	50 / 200	50 / 200	-

Product benefits:

1. Time savings due to pre-assembled system in various lengths
2. Sticks in the channel, ideal for vertical installations
3. Easy to move within the rail
4. No jamming of the spring in perforated channels
5. Just one system for all strut channels



Mounting:

1. Guide topscrew through the opening in the profile
2. Press against topscrew whilst simultaneously rotating by 90°
3. Finally, tighten hex nut

Safe working loads

The following safe working load values apply for BTS topscrews in steel and stainless steel for strut channels exposed to static load. The maximum safe working load of the channel used is to be observed. BTS provides no guarantee for the safe working load of the channel.

» Pre-mounted with washer and hex nut DIN 934

» On request: Hot-dip galvanised topscrews, individual tothing and tooth distance, special thicknesses, special lengths

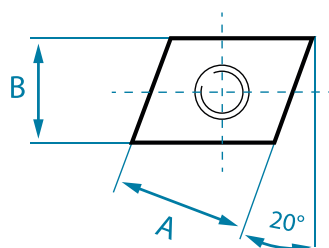
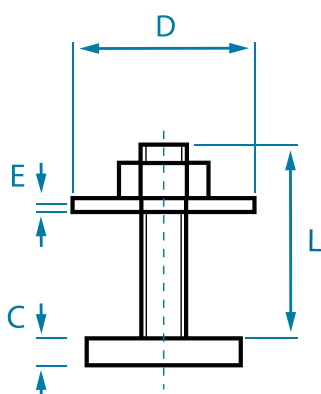
» Complete special part, can also be used for profile sizes


MATERIAL: Steel, minimum hardness 130 HB zinc-plated acc. to DIN EN ISO 4042, stainless steel A4, additional finishes on request

All of the dimensions stated above are approximate and may deviate both upwards and downwards.

HAMMER-HEAD BOLTS

FOR PROFILES WITH STRAIGHT FLANGES TYPE 27/18 & 28/30



DIMENSIONS in mm M8xL	A	B	C	D	E	 pieces/box
M8x30	21	16	5	ø 24	2	50
M8x40	21	16	5	ø 24	2	50
M8x50	21	16	5	ø 24	2	50
M8x80	21	16	5	ø 24	2	50

- » Completely mounted with DIN 9021 washer and DIN 934 hex nut
- » On request: Special parts, also for other profile sizes

MATERIAL: Steel, zinc-plated acc. to DIN EN ISO 4042, further finishes on request

All of the dimensions stated above are approximate and may deviate both upwards and downwards.