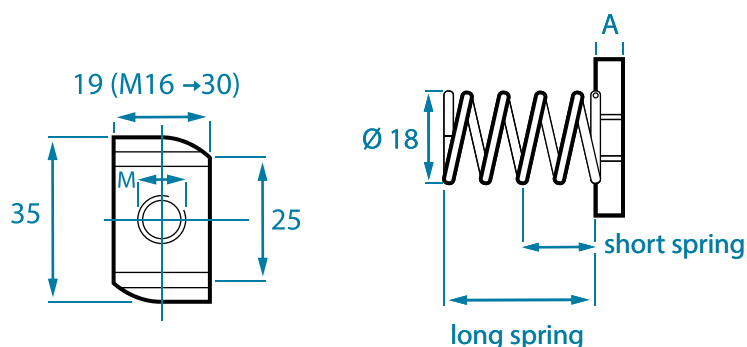


CHANNEL NUTS

TOOTHED FOR STRUT CHANNELS



| | without spring | | short spring | | long spring | | TOPNUT | |
|------|----------------|------------|--------------|------------|-------------|------------|--------|------------|
| | A | pieces/box | A | pieces/box | A | pieces/box | A | pieces/box |
| M 6 | 6 | 100 / 400 | 6 | 100 / 400 | 6 | 100 / 400 | 6 | 100 |
| M 8 | 6 | 100 / 400 | 6 | 100 / 400 | 6 | 100 / 400 | 6 | 100 |
| M 10 | 8 | 100 / 400 | 8 | 100 / 400 | 8 | 100 / 400 | 8 | 100 |
| M 12 | 9 | 100 / 400 | 8 | 100 / 400 | 9 | 100 / 400 | 9 | 100 |
| M 16 | 10 | 50 / 200 | - | - | - | - | - | - |

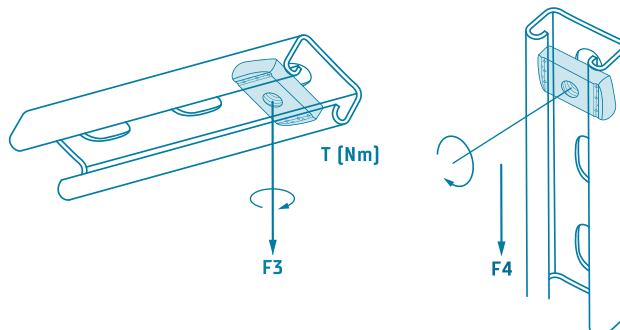
Safe working loads

Channel nuts

The following safe working loads apply for BTS channel nuts in steel and stainless steel for strut channels in combination with a threaded rod

of strength class 4.6 [A4 - 50] exposed to static load. The maximum safe working load of the channel used is to be observed. BTS provides no guarantee for the safe working load of the channel.

| Dimensions in mm | F3 [kN] | F4 [kN] | T [Nm] |
|------------------|---------|---------|--------|
| M 6 | 5 | 1 | 3,5 |
| M 8 | 6 | 2,4 | 8,4 |
| M 10 | 7 | 3,5 | 17 |
| M 12 | 7 | 4 | 29 |
| M 16 | 12 | 4 | 71 |



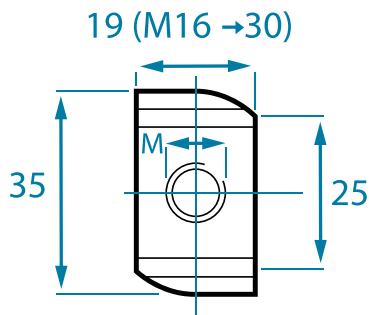
- » On request: Hot-dip galvanised channel nuts with oversize, individual toothing and tooth distance, special thicknesses
- » As complete special part, also for other profile sizes

MATERIAL: Steel, minimum hardness 130 HB zinc-plated acc. to DIN EN ISO 4042, hot-dip galvanised, stainless steel A4, additional finishes on request

All of the dimensions stated above are approximate and may deviate both upwards and downwards.

CHANNEL NUTS

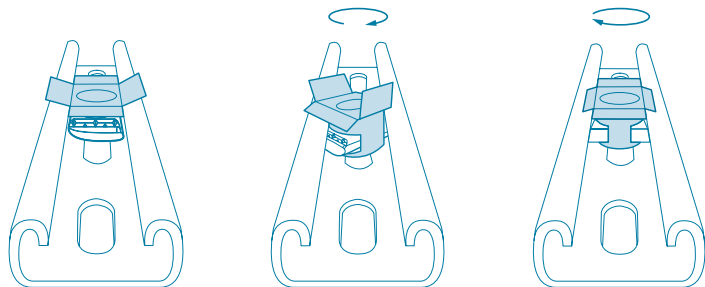
TOOTHED, WITH FIXING RETAINER FOR STRUT CHANNELS



Measures in mm



| Channel nuts with fixing retainer | | |
|-----------------------------------|----------------|------------|
| | Thickness (mm) | pieces/box |
| M6 | 6 | 100 |
| M8 | 6 | 100 |
| M10 | 8 | 100 |
| M12 | 9 | 100 |



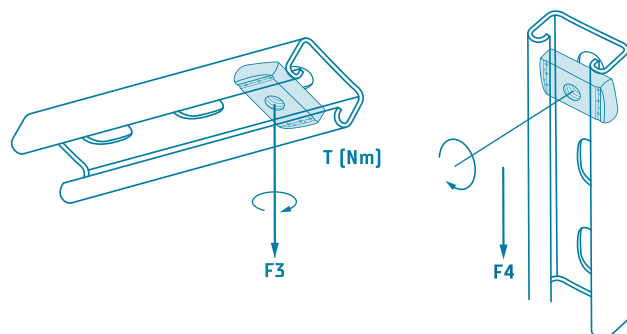
Safe working loads Channel nuts

The following safe working loads apply for BTS channel nuts in steel and stainless steel for strut channels in combination with a threaded rod of strength class 4.6 (A4 - 50) exposed to static load.

| Dimensions in mm | F3 [kN] | F4 [kN] | T [Nm] |
|------------------|---------|---------|--------|
| M 6 | 5 | 1 | 3,5 |
| M 8 | 6 | 2,4 | 8,4 |
| M 10 | 7 | 3,5 | 17 |
| M 12 | 7 | 4 | 29 |

“Fixing at the flick of a wrist”

The maximum safe working load of the channel used is to be observed. BTS provides no guarantee for the safe working load of the channel.



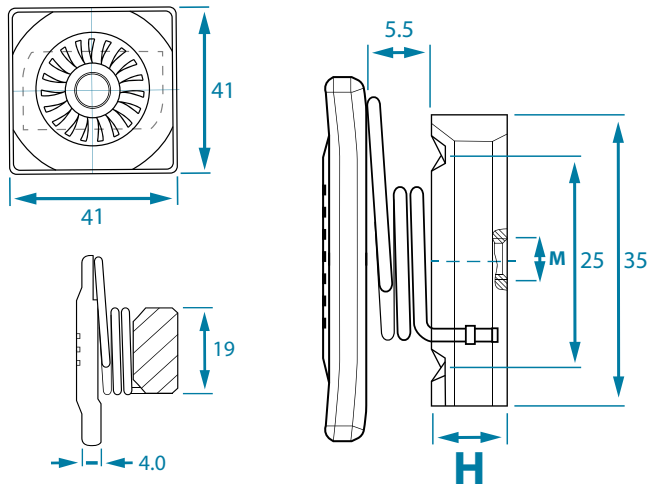
- » One type for all strut channels
- » Simple and fast mounting with one hand
- » Holds after rotation in the rail, ideal for vertically installed channels
- » Remains easy to move after mounting
- » No jamming of the spring in perforated channels
- » On request: Hot-dip galvanised channel nuts with oversize, individual tothing /tooth spacing, special thicknesses, plastic in RAL colour on customer request
Complete special part, also for other profile sizes

MATERIAL: Steel channel nut, min hardness 130 HB zinc-plated acc. to DIN EN ISO 4042 or hot-dip galvanised, stainless steel A4, polypropylene (plastic) fixing retainer with grey colour acc. to RAL7040, additional finishes on request

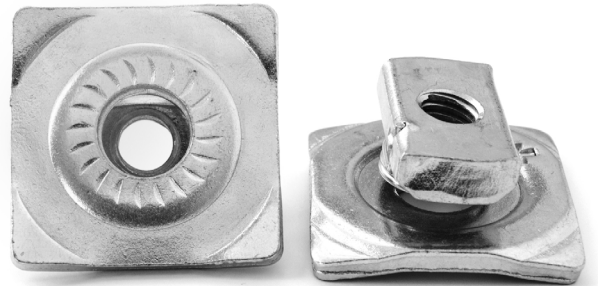
All of the dimensions stated above are approximate and may deviate both upwards and downwards.

COMBO CHANNEL NUTS

WITH PREINSTALLED SQUARE WASHER AND SPRING FOR STRUT CHANNELS



Measures in mm



Combo Channel Nuts

| | H (mm) | pieces/box |
|-----|--------|------------|
| M6 | 6 | 100 |
| M8 | 6 | 100 |
| M10 | 8 | 100 |
| M12 | 9 | 100 |

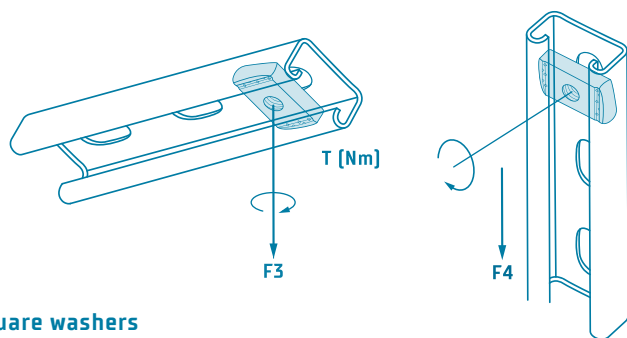
Safe working loads

Channel nuts

The following safe working loads apply for BTS channel nuts in steel and stainless steel for strut mounting rails in combination with a threaded rod of strength class 4.6 [A4- 50] exposed to static load.

The maximum safe working load of the channel used is to be observed. BTS provides no guarantee for the safe working load of the channel.

| Dimensions in mm | F3 [kN] | F4 [kN] | T [Nm] |
|------------------|---------|---------|--------|
| M 6 | 5 | 1 | 3,5 |
| M 8 | 6 | 2,4 | 8,4 |
| M 10 | 7 | 3,5 | 17 |
| M 12 | 7 | 4 | 29 |



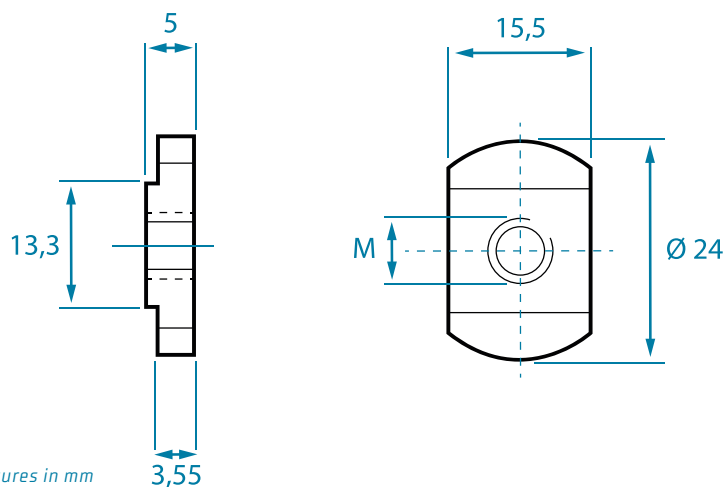
- » Combines the functions of spring channel nuts and square washers
- » Square washer with toothings for a conditional protection against self-loosening of the bolt
- » No jamming in perforated channels thanks to the spring on the top
- » All parts made of steel – robust product
- » One type for all strut channels
- » Ideal for vertically installed channels – holds in the channel after rotation
- » Remains easy to move after mounting
- » On request: Hot-dip galvanised channel nuts, stainless steel A4, individual toothings / tooth spacing, special thicknesses, complete special part – also for other profile sizes

MATERIAL: Steel channel nut and square washer, min. hardness 130 HB, zinc-plated

All of the dimensions stated above are approximate and may deviate both upwards and downwards. Subject to prior sale.

CHANNEL NUTS

FOR CHANNELS WITH STRAIGHT FLANGES



| Dimensions in mm | | | |
|------------------|---------|---------|------------|
| | Length | Width | pieces/box |
| M 6, 8, 10 | 24,0 mm | 15,5 mm | 100 / 1800 |

MATERIAL: Steel, min. hardness 130 HB, zinc-plated acc. to DIN EN ISO 4042, further finishes on request

For hydraulic clamp bodies

LIGHT SERIES: For securing of pipe and hose clamps in mounting rails
M6, 1/4", M8, 5/16"

HEAVY SERIES: For securing of pipe and hose clamps in mounting rails GMV10 + 12, M10, M12



MATERIAL: Malleable cast iron, EN-GJMB-350-10 acc. to DIN EN 1562, non-plated, zinc-plated, nickel-plated acc. to DIN EN ISO 4042, on request stainless steel A2 and A4, pickled, passivated

All of the dimensions stated above are approximate and may deviate both upwards and downwards.