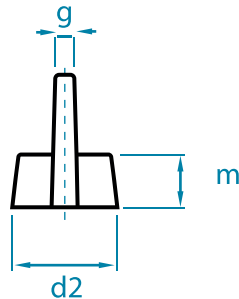
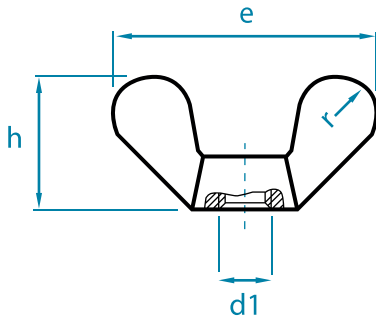



WING NUTS

DIN 315 | CAST VERSION



METRIC d1	UNC/BSW d1	DIMENSIONS						
		e	h	d2	g	m	r	
M 4	5/32"	19,0	9,5	7,0	1,5	3,9	3	500
M 5	3/16"	25,0	12,0	9,5	1,9	5,3	4	500
M 6	1/4"	31,5	16,0	11,5	1,9	6,5	5	200
M 8	5/16"	37,5	19,0	14,5	2,4	8,3	6	100
M 10	3/8"	49,5	24,0	18,5	4,0	10,0	8	100
M 12	1/2"	63,5	32,3	21,5	4,5	12,0	10	50
M 14	9/16"	63,5	32,3	21,5	4,5	12,0	10	50
M 16	5/8"	71,5	36,3	27,5	6,0	15,0	11	20
M 18	-	71,5	36,3	27,5	6,0	15,0	11	20
M 20	3/4"	88,0	45,3	33,5	6,5	18,5	14	10
M 22	7/8"	88,0	45,3	33,5	6,5	18,5	14	10
M 24	1"	108,0	55,0	42,5	9,0	22,5	18	5

- » Radiuses as per DIN 315, ergonomically formed, no sharp edges
- » Complete range M4 – M24 available while stocks last
- » On request: specialist threads, specialist parts on the basis of DIN 315 e.g. with eye
- » RoHS-compliant galvanisation (chromium VI - free)
- » See also "Specialist wing nuts"

PACKAGING: Standard or according to customer specification

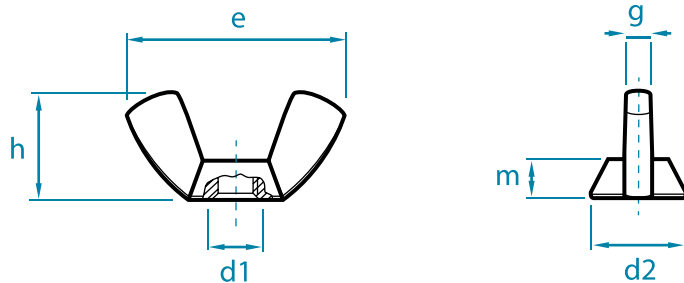
MATERIAL: Malleable cast iron EN-GJMB-350-10 as per DIN EN 1562 bright, galvanised as per DIN EN ISO 4042, brass (MS) 2.0401 as per DIN CEN/TS 13388 bright, nickel-plated as per DIN EN ISO 4042, aluminium (AL); stainless steel A2, A4, pickled, passivated


TOLERANCE: Metric thread 6 H (bright 6 G) as per DIN EN ISO 965-1

All of the dimensions stated above are approximate and may deviate both upwards and downwards.

WING NUTS

AMERICAN FORM | COLD-FORMED



METRIC d1	ZOLL d1	DIMENSIONS								
		e	h	d	g	m	Stahl	A2	A4	Brass
M 3	1/8"	18,5	8,8	7,8	2,0	3,0	500	100	100	500
M 4	5/32"	18,5	8,8	7,8	2,0	3,0	500	100	100	500
M 5	3/16"	22,0	10,5	9,5	2,6	4,0	500	100	100	500
M 6	1/4"	26,8	12,9	11,9	3,0	4,9	500	100	100	500
M 8	5/16"	30,3	14,8	13,5	3,3	5,4	200	100	100	100
M 10	3/8"	35,3	17,3	15,3	4,0	6,3	100	100	100	100
M 12	1/2"	47,5	22,5	20,5	5,0	7,9	50	50	50	50
M 14	9/16"	65,0	30,8	25,0	6,5	10,6	50	50	50	50
M 16	5/8"	65,0	30,8	25,0	6,5	10,6	50	20	20	-
M 20	3/4"	66,5	31,2	29,3	7,2	12,2	50	20	20	-

- » Metric thread from M3 to M20 available while stocks last
- » On request: inch thread, specialist parts on the basis of the American form, e.g. with eye

PACKAGING: Standard or according to customer specification

MATERIAL: Steel bright, galvanised, nickel-plated as per DIN EN ISO 4042,
brass bright, nickel-plated as per DIN EN ISO 4042
stainless steel A2 or A4, pickled, passivated

TOLERANCE: Metric thread 7 H (bright 7 G) as per DIN EN ISO 965-1

All of the dimensions stated above are approximate and may deviate both upwards and downwards.

SPECIALIST WING NUTS

PRODUCT EXAMPLES IN BRASS

Waler wing nuts

cast design

M8, M10, M12

Surface finish bright or nickel-plated



Wing nuts with only one wing

cast design

M8

Surface finish bright or nickel-plated



Scythe nuts

cast design

M10



- » According to BTS company standard
- » As complete specialist part as per drawing / sample
- » On request: complete planning and design of new parts

STANDARD FINISHES: Bright, galvanised, nickel-plated as per DIN EN ISO 4042

Further materials, finishes and specialist packaging on request.

SPECIALIST WING NUTS

EXAMPLE PRODUCTS IN MALLEABLE CAST IRON EN-GJMB-350-10 AS PER DIN EN 1562

Modell „S“ – 40 mm wing breadth

M5 or M6

Surface finish as requested



Modell „SO“ – 60 mm wing breadth

M5, M6 or M8

Surface finish as requested



Hex wing nuts

M6 / spanner width 11 mm

M6, M8 or M10 / spanner width 13 mm

Thread cast in one piece from wing to hexagon

Surface finish as requested



PRODUCT EXAMPLES IN STEEL SHEET

Steel sheet wing nuts, galvanised

Flat form

M4, M5, M6 or M8



Steel sheet wing nuts, galvanised

High form

M5, M6 or M8



- » According to BTS company standard
- » As complete specialist part as per drawing / sample
- » On request: complete planning and design of new parts

Minimum volumes are required, depending on article or surface finish.