




HOOKS AND EYES

Suspension eyes	AO 700	AO 701	AO 702
Height approx. mm	28	35	54
Eye Ø approx. mm	10	14	28
Thread	M 6	M 6 / M 8	M 6 / M 8 / M 10
	100 Pcs	50 Pcs	50 Pcs



Suspension hooks	AH 710	AH 711	
Height approx. mm	28	34	
Eye Ø approx. mm	10	13	
Thread	M 6 / M 8	M 6 / M 8	
	100 Pcs	100 Pcs	



Mounting eyes	BO 716	BO 718	
Height x width approx. mm	40 x 18	45 x 24	
Eye Ø approx. mm	9	12	
Thread	M 6 / M 8	M 6 / M 8 / M 10 / M 12	
	100 Pcs	50 Pcs	



Staples	25 mm	30 mm	14x68 mm
Malleable cast iron EN-GJMB-350-10 as per DIN EN 1562			
Centre distance	50,8 mm	56,4 mm	54,3 mm
Clear span	25,5 mm	31,0 mm	30,2 mm
Full height	13,8 mm	13,9 mm	14,2 mm



Single hooks	Base plate approx 50x14 mm
Centre distance	38 mm



Double hooks	Base plate approx. 45x14 mm
Centre distance	20 mm



MATERIAL: Malleable cast iron EN-GJMB-350-10 as per DIN EN 1562
SURFACE FINISH: Steel bright, galvanised, nickel-plated as per DIN EN ISO 4042, further finishes on request
TOLERANCE: Metric thread 6 H (bright 6 G) as per DIN EN ISO 965-1

Minimum volumes are required, depending on article or surface finish.

All of the dimensions stated above are approximate and may deviate both upwards and downwards.

SPECIAL ITEMS

Semi-circular washer

Malleable cast iron EN-6JMB-350-10

23 x 26 x 7 mm

With hole 12 mm



Star grip nut

Malleable cast iron EN-6JMB-350-10

With thread M10



Flag holders/ jointing sleeves

Malleable cast iron EN-6JMB-350-10 with or without lug



Holder for window shutter

Grey cast iron



- » According to BTS company standard
- » As complete specialist part as per drawing or sample
- » On request: complete planning and design of new parts

SURFACE FINISH: For malleable cast iron parts bright, galvanised, nickel-plated as per DIN EN ISO 4042, further finishes on request, see respective comments for other materials.


Minimum volumes are required, depending on article or surface finish.

All of the dimensions stated above are approximate and may deviate both upwards and downwards.

KEYS

Mandril key, three-edged and square

Dimensions: 4,0mm 5,0mm 6,0mm 6,5mm 7,0mm 7,5mm
Dimensions: 8,0mm 8,5mm 9,0mm 10,0mm 11,0mm 12,0mm

 4,0 – 8,5 100 Pcs 9,0 – 12,0 50 Pcs

Square socket key, length approx. 110 mm, conus approx. 7-9mm

 50 Pcs

Water tap key, square socket 5.3 x 5.3 mm for size 5

 100 Pcs

Angle key with hole, conus approx. 6-9mm, square socket: 8mm

 50 Pcs

Angle key without hole, conus approx. 6-9mm, square socket: 8mm

 50 Pcs



MATERIAL:

Malleable cast iron EN-GJMB-350-10 as per DIN EN 1562

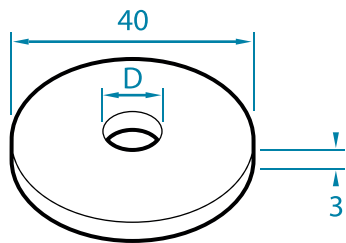
SURFACE FINISH:

Steel bright, galvanised, nickel-plated as per DIN EN ISO 4042,
further finishes on request

Minimum volumes are required, depending on article or surface finish.

All of the dimensions stated above are approximate and may deviate both upwards and downwards.

U WASHERS



Diameter D
8,4
10,5
13

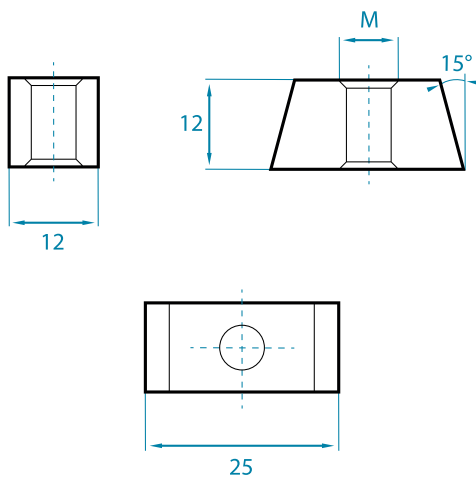


» Ideal dimensions for use in connection with strut rail system

PACKAGING: 100 pcs/box

MATERIAL: Steel, minimum hardness 130 HB galvanised as per DIN EN ISO 4042, stainless steel A4, further dimensions and finishes on request.

SLIDING BLOCKS FOR CEILING SUSPENSION ON COMPOSITE PROFILES WITH 15° V-SHAPED GROOVE



Thread M
M 4
M 5
M 6
M 8
M 10

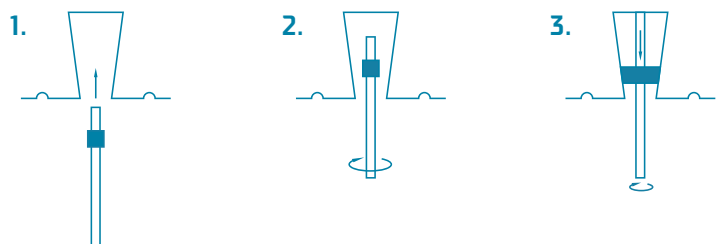


PACKAGING: 100 pcs/box

MATERIAL: Steel, min. hardness 130 HB, galvanised as per DIN EN ISO 4042, further finishes on request

Application:

1. Rotate sliding block on threaded rod.
2. Guide sliding block through the opening in the profile.
3. Rotate threaded rod with sliding block 90°, then pull downwards before rotating upwards until locking. The conical form then lies flat with the angle of the profile. All of the dimensions stated above are approximate and may deviate both upwards and downwards.



All of the dimensions stated above are approximate and may deviate both upwards and downwards.